

## 45 GALLON DRUM TIPPER

### SINGLE PILLAR 45 GALLON DRUM TIPPER

BTM/250/1400/B/G

### 45 GALLON DRUM TIPPER DESCRIPTION

This 45 Gallon drum tipper is a single pillar drum tipper that is designed to lift and tip at a discharge height of 1400mm. The 45 Gallon drum tipper is constructed from Grade 304 stainless steel, is fully TIG welded throughout and will operate on a 'dead mans handle' principle. Lifting with the 45 Gallon drum tipper is achieved by a 3/4" Simplex chain driven by a motor gearbox mounted at the top of the main column. The 45 Gallon drum tipper is designed to be bolted to the floor.



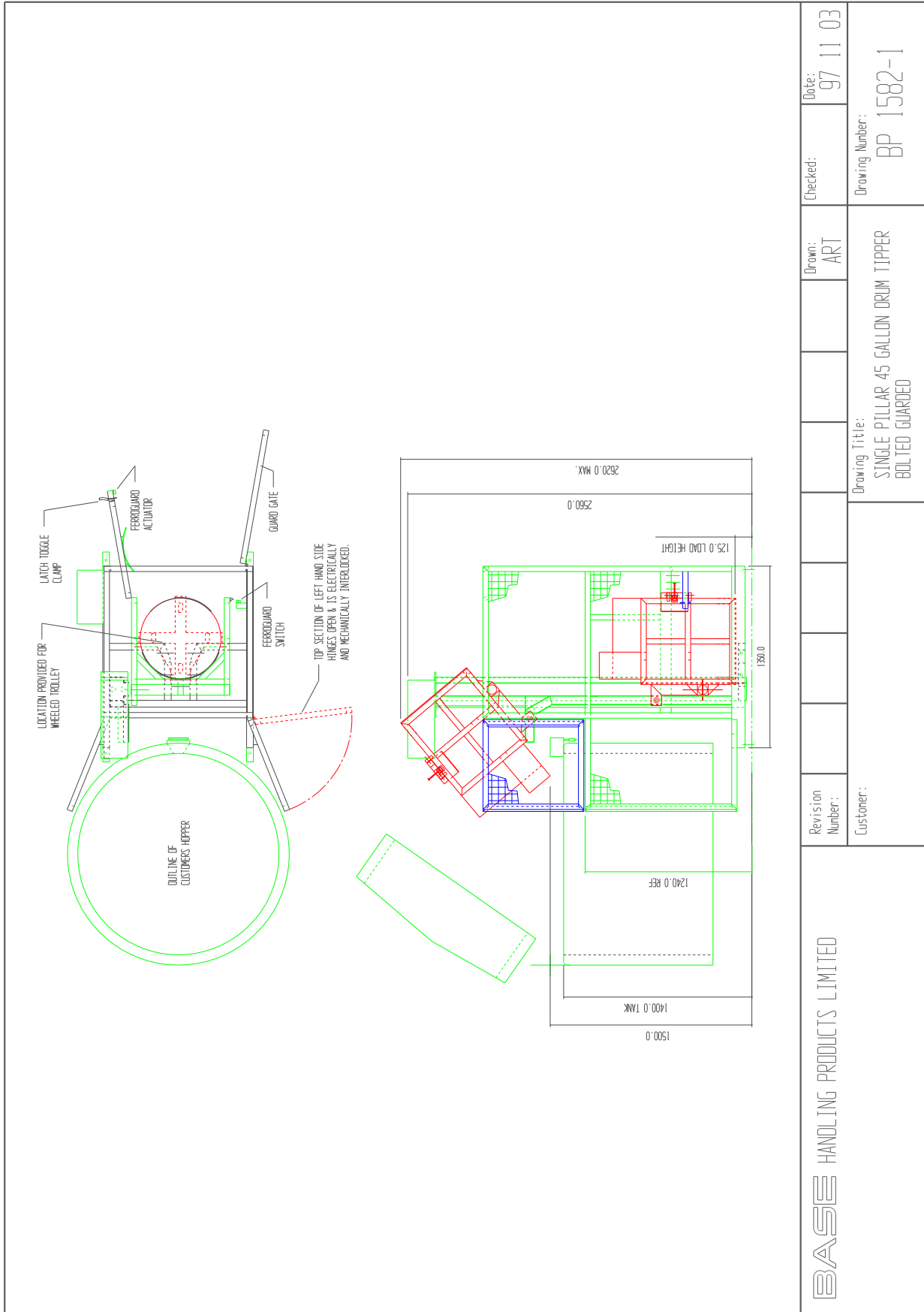
45 Gallon Drum Tipper

## 45 GALLON DRUM TIPPER SPECIFICATION

DESCRIPTION	SINGLE PILLAR 45 GALLON DRUM TIPPER
MODEL No.	BTM/250/1400/B/G
CAPACITY	250Kgs
TIPPING HEIGHT	1400mm
TIPPING ANGLE	130 DEGREES
OVERALL HEIGHT	2350mm
MACHINE HANDING	LEFT OR RIGHT HAND AVAILABLE
TIPPING CHUTE	OPTIONAL
CONTAINER DESCRIPTION	45 GALLON STEEL DRUMS
BASE ARRANGEMENT	BOLTED TO THE FLOOR
CONTROL CIRCUIT	24Vac (STANDARD)
ELECTRICAL RATING	IP65
LIMIT SWITCHES	ADJUSTABLE ROD
MOTOR DETAIL	0.55kW, 415V, 3 PHASE, 50 CYCLE
MOTOR BRAKE	415V SEPARATELY EXCITED
GEARBOX DETAIL	FLENDER D38 M1P4D7.5
OUTPUT R.P.M.	28 R.P.M.
RATIO	50:1
LOAD/TENSION CHAIN	¾" SIMPLEX DELTA Z
TENSILE STRENGTH	3000Kgs
LIFT SPEED	6.4 METERS/MINUTE

## 45 GALLON DRUM TIPPER APPLICATION STORY

This 45 Gallon drum tipper was used to lift and tip a solid 45 Gallon drum full of margarine into a melting vessel. Because the margarine was a solid core, the drum had to be retained with a clamping mechanism. This clamping mechanism had to be monitored via a magnetic guard switch to ensure that the clamp was closed prior to lifting and tipping



BASE HANDLING PRODUCTS LIMITED	Revision Number:	Drawn:	Checked:	Date:
	Customer:	ART		97 11 03
Drawing Title:		Drawing Number:		
SINGLE PILLAR 45 GALLON DRUM TIPPER BOLTED GUARDED		BP 1582-1		