

## DOUBLE PILLAR LIFTER

### DOUBLE PILLAR LIFTER

BTM/600/3200/B/G

### DOUBLE PILLAR LIFTER DESCRIPTION

This double pillar lifter is designed to lift and tip a 680 Litre container (1020 x 820 x 1210mm High) at a discharge height of 3200mm. The double pillar lifter is constructed from Grade 304 stainless steel and is fully TIG welded throughout. Lifting with the double pillar lifter is accomplished via chains driven by a motor gearbox mounted at the top of the one column with a crossover shaft to the other column. This double pillar lifter is designed to be bolted to the floor.



Double Pillar Lifter for 680 Litre Container

## SAFETY GUARD TO PD 5304:2005 SAFETY OF MACHINERY

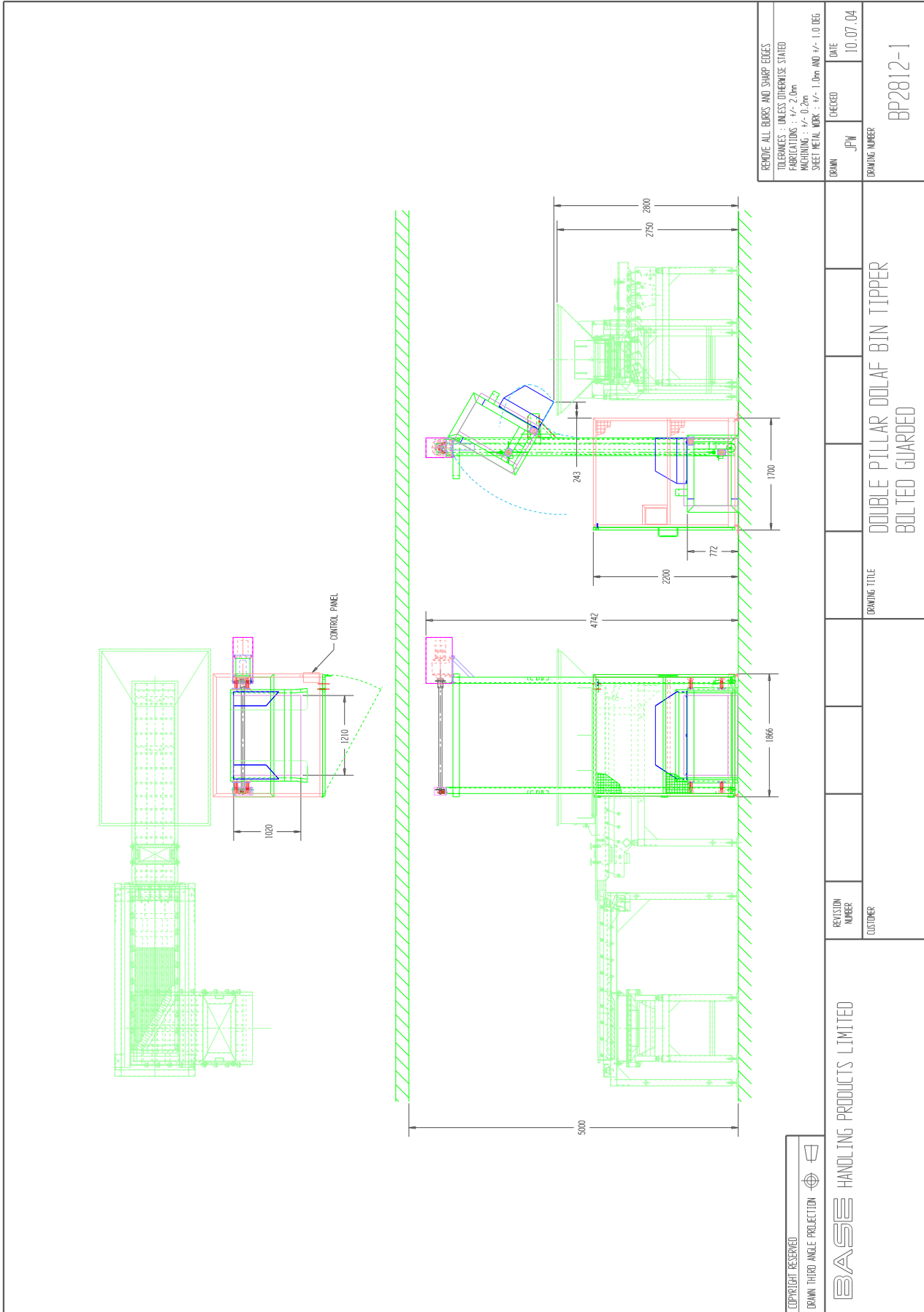
The safety guard is constructed from 40 x 40 x 3mm stainless steel box section and 3mm wire, 40mm aperture stainless steel weld mesh to meet the requirements of PD 5304:2005 Safety of Machinery. It would enclose the double pillar lifter to a height of 2200mm on three sides with a hinged door on the fourth side. The guard door is electrically and mechanically interlocked preventing the double pillar lifter from operating with the door open. In addition, the guard door can only be opened when the lifting carriage is at the full down position. The double pillar lifter control system has provision for a 'Call for Product' signal to be connected.

## DOUBLE PILLAR LIFTER SPECIFICATION

DESCRIPTION	DOUBLE PILLAR LIFTER
MODEL No.	BTM/600/3200/B/G
CAPACITY	600Kgs
TIPPING HEIGHT	3200mm
TIPPING ANGLE	130 DEGREES
OVERALL HEIGHT	4750mm
MACHINE HANDING	LEFT OR RIGHT HAND AVAILABLE
TIPPING CHUTE	OPTIONAL
CONTAINER DESCRIPTION	680 LITRE CONTAINER
BASE ARRANGEMENT	BOLTED TO THE FLOOR
CONTROL CIRCUIT	24Vac (STANDARD)
ELECTRICAL RATING	IP65
LIMIT SWITCHES	ADJUSTABLE ROD
MOTOR DETAIL	2.2kW, 415V, 3 PHASE, 50 CYCLE
MOTOR BRAKE	415V SEPARATELY EXCITED
GEARBOX DETAIL	FLENDER
LOAD CHAIN	1" SIMPLEX SEDIS DELTA Z
TENSION CHAIN	3/4" SIMPLEX DELTA Z
LIFT SPEED	6.4 METERS/MINUTE

## DOUBLE PILLAR LIFTER APPLICATION STORY

This double pillar lifter was required to lift and tip confectionery products into a conveyor storage system. A selection of different confectionery was lifted, tipped and spread onto the storage conveyor until a level of approximately 250mm was achieved. The confectionery was then fed off the storage conveyor onto another conveyor at the beginning of a packing line.



REMOVE ALL BARRS AND SHARP EDGES	
TOLERANCES : UNLESS OTHERWISE STATED	
FABRICATIONS : +/- 2.0mm	
MACHINING : +/- 0.2mm	
SHEET METAL WORK : +/- 1.0mm AND +/- 1.0 DEG	
DRAWN	DATE
JPW	10.07.04
CHECKED	
DRAWING NUMBER	
BP2812-1	

REVISION NUMBER	
CUSTOMER	
DRAWING TITLE	
DOUBLE PILLAR DOLAF BIN TIPPER	
BOLTED GUARDED	

COPYRIGHT RESERVED  
 DRAWN THIRD ANGLE PROJECTION  

 BASE HANDLING PRODUCTS LIMITED