

ATEX Bin Tipper

ATEX Bin Tipper for 200 Litre Tote Bins

BTM/250/1750/B/G

ATEX Bin Tipper Description

This ATEX Bin tipper for 200 Litre tote bins is designed to lift and tip at a discharge height of 1750mm. The ATEX Bin tipper is constructed from Grade 304 stainless steel and is fully TIG welded throughout. Lifting with the ATEX Bin tipper is achieved by a 50mm Toothed Belt driven by a motor gearbox mounted at the top of the main column. The toothed belt is used because it can be run without lubricant and will be impervious to the ingress of the sugar dust. The drive motor, travel limit switches and control panel will all be constructed to meet the appropriate ATEX regulations. This ATEX Bin tipper is designed to be bolted to the floor.



*ATEX Bin Tipper for 200 Litre Tote Bin
Bolted Guarded*

Call now on **01495 312 172**

webenquiry@basehandling.co.uk

Base Handling Products Limited, Unit 20, Barleyfield Industrial Estate
Brynmawr, Gwent, NP23 4YF.



Safety Guard to PD 5304:2005 Safety of Machinery

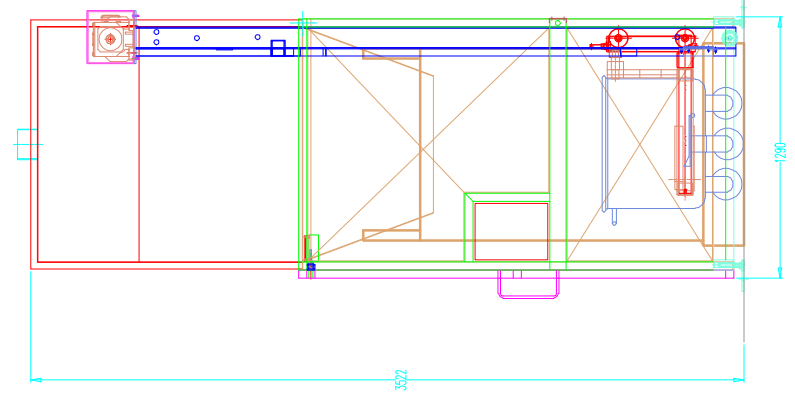
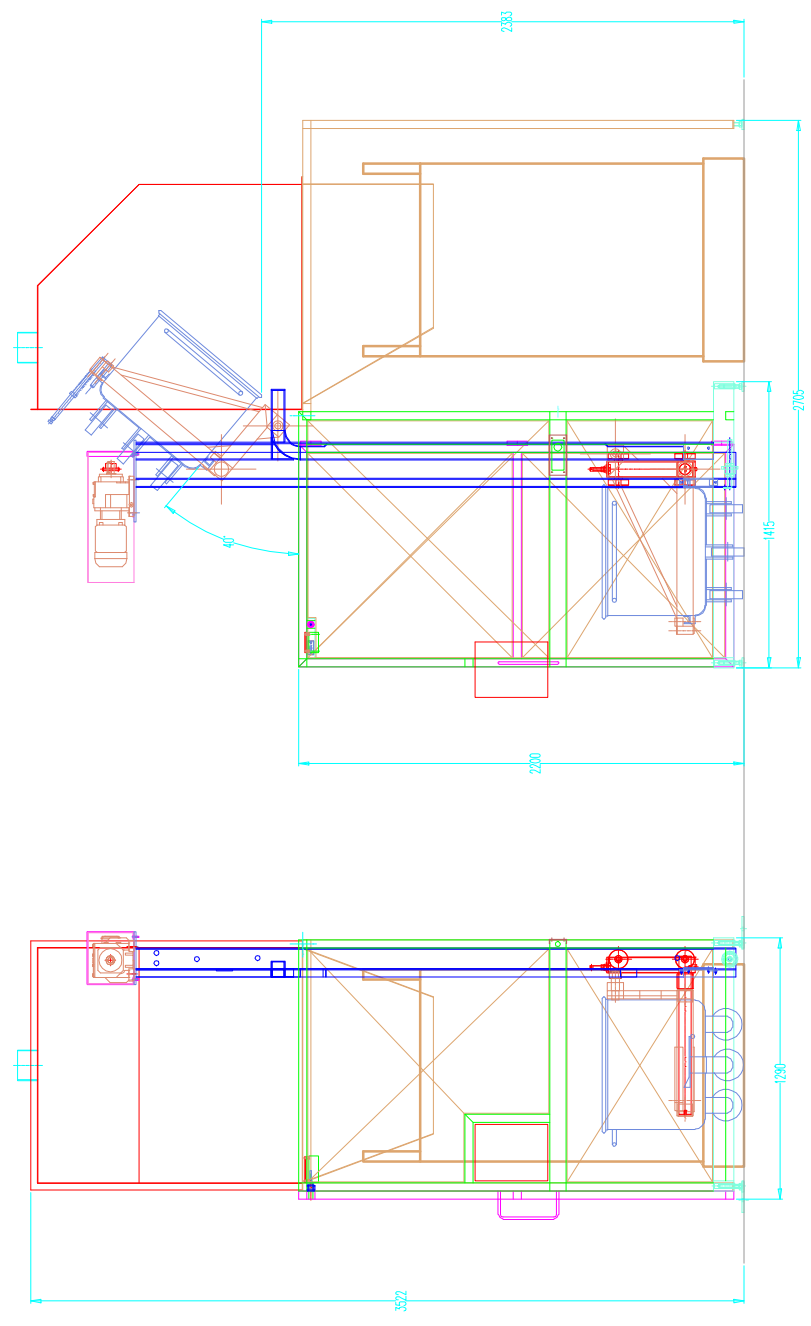
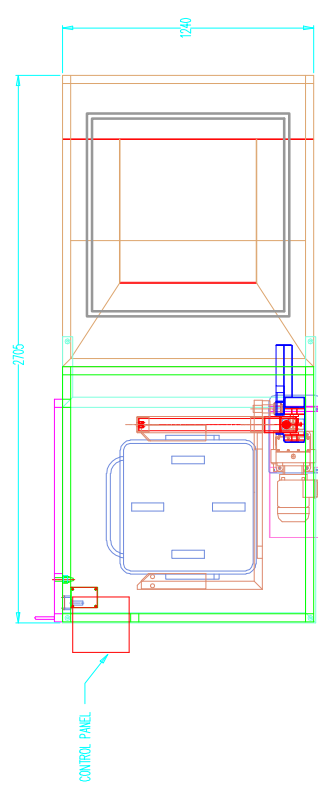
The safety guard is constructed from 40 x 40 x 3mm stainless steel box section and 2mm stainless steel sheet to meet the requirements of PD 5304:2005 Safety of Machinery. It encloses the ATEX Bin tipper to a height of 2200mm on two sides, 1700mm at the front, with a hinged door on the fourth side. The guard door is electrically and mechanically interlocked preventing the ATEX Bin tipper from operating with the door open. In addition, the guard door can only be opened when the lifting carriage is at the full down position. The ATEX Bin tipper control system has provision for a 'Call for Product' signal to be connected.

ATEX Bin Tipper Specification

DESCRIPTION	ATEX BIN TIPPER
MODEL No.	BTM/250/1750/B/G
CAPACITY	250Kgs
TIPPING HEIGHT	1750mm
TIPPING ANGLE	130 DEGREES
OVERALL HEIGHT	2700mm
MACHINE HANDING	LEFT OR RIGHT HAND AVAILABLE
TIPPING CHUTE	OPTIONAL
CONTAINER DESCRIPTION	200 LITRE TOTE BINS, S/STL or PLASTIC
BASE ARRANGEMENT	BOLTED TO THE FLOOR
CONTROL CIRCUIT	24Vac (STANDARD)
ELECTRICAL RATING	ATEX ZONE & TEMPERATURE TBC.
LIMIT SWITCHES	ATEX ADJUSTABLE ROD
MOTOR DETAIL	0.75kW, EEXDE 2C 2D ZONE 21 T125 TBC
MOTOR BRAKE	SUITABLE ATEX ZONE 21 T125 TBC
GEARBOX DETAIL	D48-K4-DBGW-080BH-04 ZONE 21 T125 TBC
OUTPUT R.P.M.	28 R.P.M.
RATIO	50:1
LOAD/TENSION CHAIN	50mm TOOTHED BELT
TENSILE STRENGTH	27000N
LIFT SPEED	6.4 METERS/MINUTE

ATEX Bin Tipper Application Story

This ATEX Bin tipper was designed to lift and tip 200 Litre tote bins of sugar into a Bulk Bag. The stainless steel enclosure is required to contain as much dust as possible during the tipping operation and is also connected to an extraction system. The dust in this environment could potentially ignite and the ATEX Bin tipper was therefore constructed to meet the ATEX requirements of this application.



REMOVE ALL BURRS AND SHARP EDGES	
TOLERANCES : UNLESS OTHERWISE STATED	
FABRICATIONS : +/- 2,0mm	
MACHINING : +/- 0,2mm	
SHEET METAL WORK : +/- 1,0mm AND +/- 1,0 DEG	
DRAWN	CHECKED
JPW	DATE
	72-07-06
DRAWING NUMBER	
BP3133-1A	

COPYRIGHT RESERVED
 DRAWN THIRD ANGLE PROJECTION



BASE HANDLING PRODUCTS LIMITED
 UNIT 20 BARLETFIELD INDUSTRIAL ESTATE,
 BRYNMAWR,
 GWENT, NP23 4TF
 TEL: (01495) 312172 FAX: (01495) 312089 EMAIL: info@baseproducts.co.uk

REVISION NUMBER	DRAWING TITLE
	ATEX SINGLE PILLAR 200 LITRE TOTE BIN TIPPER BOLTED GUARDED
CUSTOMER	