

200 Litre Plastic Tote Bin

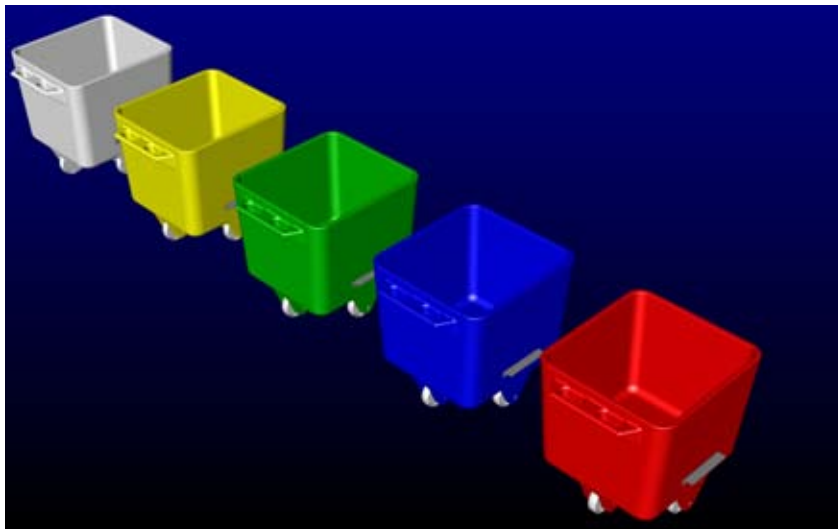
200 Litre Plastic Tote Bin as an alternative to the Stainless Steel Tote Bin

200 Litre Plastic Tote Bin Description

This 200 Litre Plastic Tote Bin was introduced as a viable alternative to the more traditional Stainless Steel Tote Bin. The bin was specially designed and developed for use in the Food and Pharmaceutical Industries which has dictated various features. Like the stainless steel bin, the 200 Litre Plastic Tote Bin has a 200 litre capacity, is mobile on nylon wheels and has strong stainless steel lifting lugs. The stainless steel lifting lugs allow the 200 Litre Plastic Tote Bin to be lifted and tipped in standard bin tipper, including the tippers available from Base Handling Products.

In addition, the 200 Litre Plastic Tote Bin has a double skinned food-quality polyethylene construction, rounded edges which make cleaning and handling quicker and safer, plus a moulded pushing handle which allows for easy wheeling and manoeuvring.

The 200 Litre Plastic Tote Bin offers significant operational benefits when compared to stainless steel bins; they are lighter, with quieter wheeling and handling; offer better resistance to denting and the double skinned construction provides good insulating properties. The 200 Litre Plastic Tote Bins are suitable for a wide range of food and pharmaceutical handling applications, not just waste and come in a standard range of colours including red, yellow, green, white and blue with other colours available to order. In addition, close fitting lids are available, if required, to protect the contents from contamination. Both the 200 Litre Plastic Tote Bin and the lids are made to exacting standards in the United Kingdom.



200 Litre Plastic Tote Bin

200 Litre Plastic Tote Bin Specification

DESCRIPTION	200 LITRE PLASTIC TOTE BIN
CAPACITY	200 LITRES
DIMENSIONS	L 725mm x W 675mm x H 735mm
COLOURS	RED, BLUE, YELLOW, GREEN, WHITE (OTHER COLOURS ON REQUEST)
WHEEL DIAMETER	150mm
MATERIAL OF CONSTRUCTION	POLYETHYLENE
LIFTING LUGS	STAINLESS STEEL GRADE 304
LIDS	OPTIONAL EXTRA

200 Litre Plastic Tote Bin Application Story

Among the first customers to order the 200 Litre Plastic Tote Bin is major food producer, Bakkavör, whose site in Lincolnshire produces chilled convenience food. As Grant Rowney, Production Manager for Bakkavör, explains; "We produce ready meals in a quality controlled, hygienic environment and needed to easily identify waste bins, for reject meals or ingredients, against bins used for handling fresh ingredients. The new 200 Litre Plastic Tote Bin, which we ordered in green, are proving to be the ideal solution as they are easily distinguished from stainless steel bins and are very easy to use and clean. Importantly, the new 200 Litre Plastic Tote Bin fit straight into our standard tipper for further segregation and recycling."

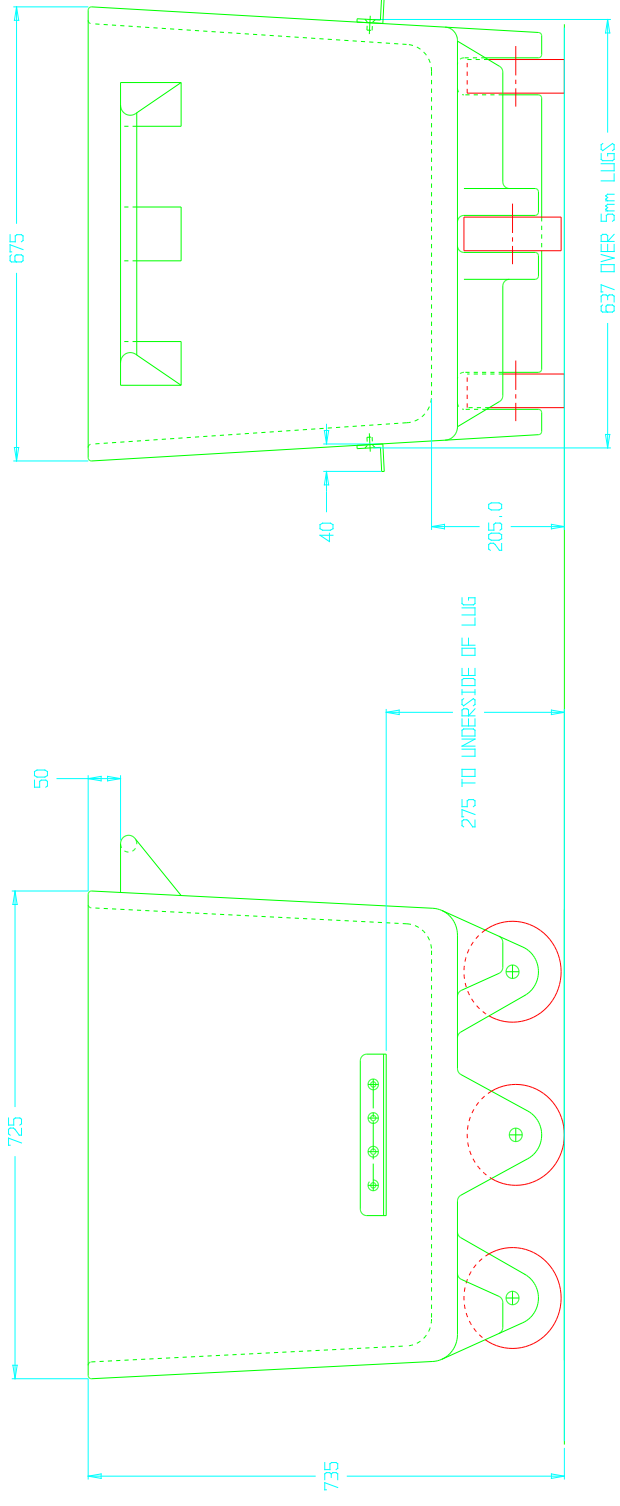
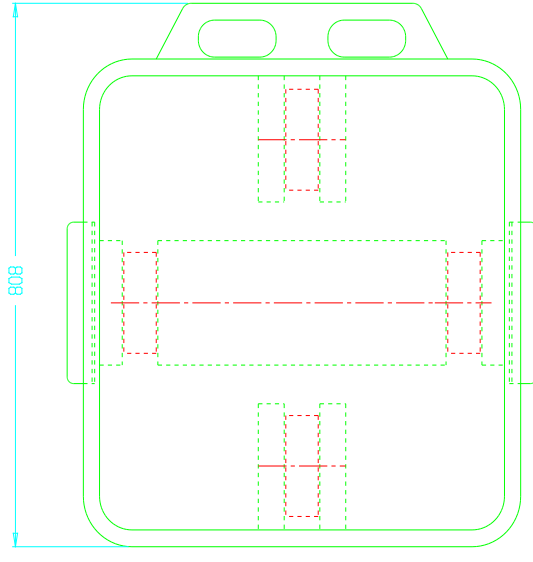
Call now on **01495 312 172**

webenquiry@basehandling.co.uk

Base Handling Products Limited, Unit 20, Barleyfield Industrial Estate
Brynmawr, Gwent, NP23 4YF.



DRAWING NUMBER
BP1562-5



BASE HANDLING PRODUCTS LIMITED
 UNIT 20 BARKFIELD INDUSTRIAL ESTATE,
 BARKFIELD, WYKE,
 LEICESTERSHIRE, LE12 7JF
 TEL: (01455) 312172 FAX: (01455) 312285 EMAIL: whorop@basehandling.co.uk

REVISION NUMBER: _____
 CUSTOMER: _____
 DRAWING TITLE: 200L PLASTIC TOTE BIN

DESIGNER: MRJ	CHECKED: _____	DATE: 05-03-03
DRAWING NUMBER: BP1562-5		
<small>REMOVE ALL BORDERS AND SHARP EDGES TOLERANCES: UNLESS OTHERWISE STATED DIMENSIONS: IN mm SHEET METAL WKS: 1.0mm AND 1.5mm DRAWN TO BS EN ISO 10303-21</small>		
DRAWN TO BS EN ISO 10303-21		