

## ATEX Wash Station

### ATEX Wash Station

#### ATEX Wash Station Description

This ATEX Wash Station was designed to be used in an ATEX Zone 21, T4 environment to allow various items to be cleaned in a controlled environment. The unit had a working area of approximately 1000 x 500mm at a safe and convenient working height. The items to be cleaned were taken to the ATEX Wash Station and cleaned using a cleaning agent and a cleaning brush. The cleaning agent was pumped through a recirculating system via a diaphragm pump mounted below the work surface. The cleaning agent was passed through a disposable filter bag to remove any solids. At the back of the unit, there was an extraction duct to allow any cleaning agent fumes to be extracted away from the operator. The extraction duct was fitted with easy change disposable filter cartridges. The ATEX Wash Station was fabricated from Grade 304 stainless steel and was a hygienically welded construction.



*ATEX Wash Station*

Call now on **01495 312 172**

[webenquiry@basehandling.co.uk](mailto:webenquiry@basehandling.co.uk)

Base Handling Products Limited, Unit 20, Barleyfield Industrial Estate  
Brynmawr, Gwent, NP23 4YF.



**ATEX Wash Station Application Story**

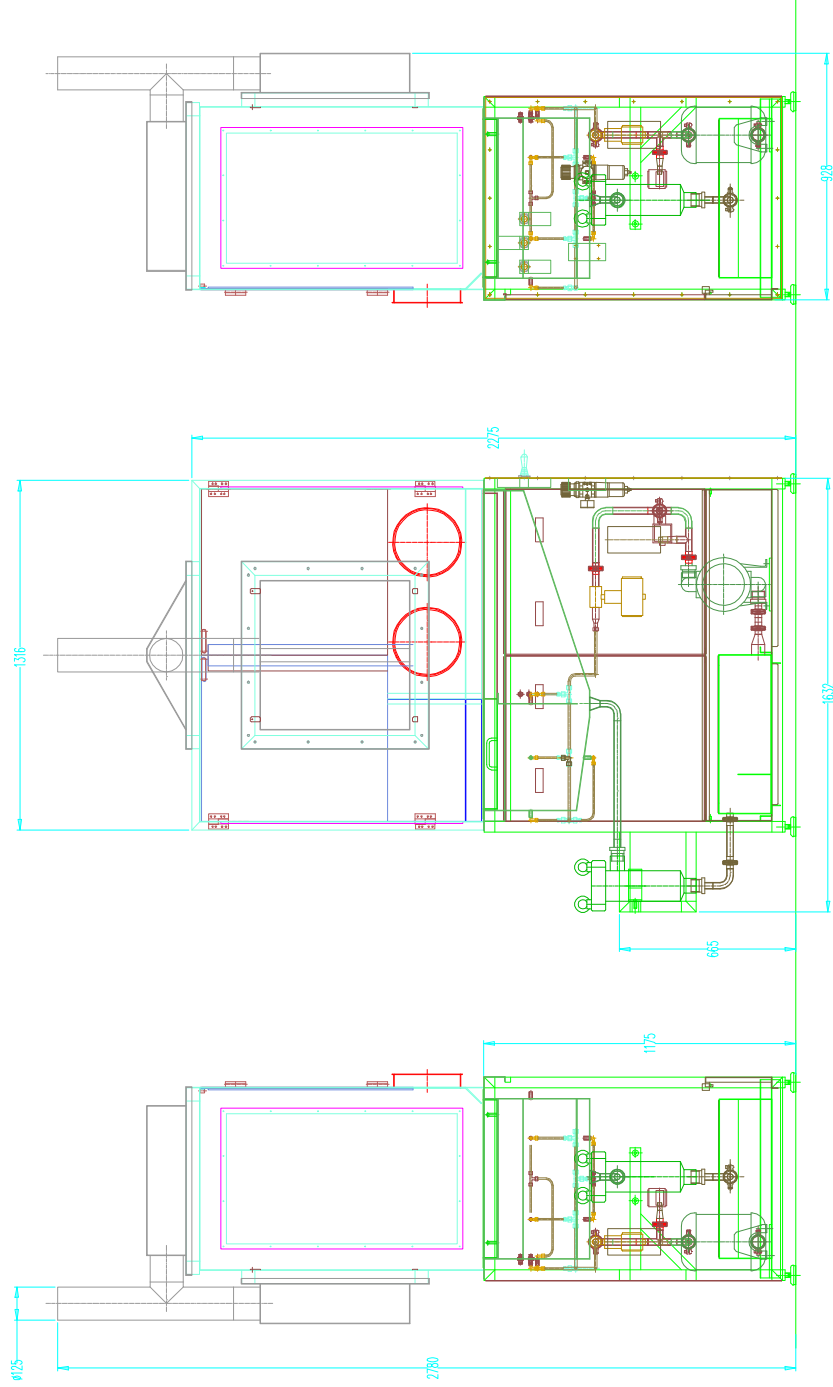
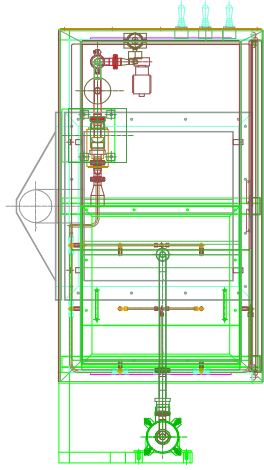
This ATEX Wash System was required to clean various items in an ATEX environment. The ATEX Wash System was constructed from stainless steel with all components suitable for use in an ATEX application. The unit was designed to meet the customer's exact needs in terms of the environment, the parts to be cleaned and the materials of construction.

Call now on **01495 312 172**

[webenquiry@basehandling.co.uk](mailto:webenquiry@basehandling.co.uk)

Base Handling Products Limited, Unit 20, Barleyfield Industrial Estate  
Brynmawr, Gwent, NP23 4YF.





REMOVE ALL BURRS AND SHARP EDGES  
 TOLERANCES : UNLESS OTHERWISE STATED  
 FABRICATIONS : +/- 2.0mm  
 MACHINING : +/- 0.2mm  
 SHEET METAL WORK : +/- 1.0mm AND +/- 1.0 DEG

DRAWN J.P.W.  
 CHECKED  
 DATE 13-10-03

DRAWING NUMBER

BP2714-1

REVISION NUMBER

CUSTOMER

DRAWING TITLE

ATEX UTENSIL WASH STATION

COPYRIGHT RESERVED

DRAWN THIRD ANGLE PROJECTION



**BASE HANDLING PRODUCTS LIMITED**

UNIT 20 BARLEFIELD INDUSTRIAL ESTATE,

BRYNMAWR,

GMENT, NP23 4TF

TEL: (01495) 312172

FAX: (01495) 312089

EMAIL: info@baseproducts.co.uk