

Between Floor Lift

Between Floor Lift
PLM/1500/2500-3015/B/G

Between Floor Lift Description

This between floor lift is a double pillar machine with a Safe Working Load of 1500 Kgs and a lift height of 2500mm to the first floor and 3015 to the second floor. The lifting platform will be big enough to allow a standard pallet (1200 x 1000mm) to be loaded using a hand pallet truck. At each of the upper levels, there will be a landing plate to allow easy unloading. The between floor lift was constructed from Grade 304 stainless steel and would be bolted to the floor. Lifting with this between floor lift is accomplished via chains driven by a motor gearbox mounted at the top of the one column with a crossover shaft to the other column.



Double Pillar Between Floor Lift for Standard Pallets

Call now on **01495 312 172**

webenquiry@basehandling.co.uk

Base Handling Products Limited, Unit 20, Barleyfield Industrial Estate
Brynmawr, Gwent, NP23 4YF.



Safety Guard to PD 5304:2005 Safety of Machinery

The safety guard is constructed from 40 x 40 x 3mm stainless steel box section and 2mm stainless steel sheet to meet the requirements of PD 5304:2005 Safety of Machinery. It would enclose the between floor lift to a height of 5185mm with a hinged door at each level through which the pallet can be loaded and unloaded. Each door is electrically interlocked to prevent the between floor lift being operated with a door open and in addition, the doors are mechanically locked closed whilst the between floor lift is running. Each door may only be opened when the lifting carriage is at the appropriate level.

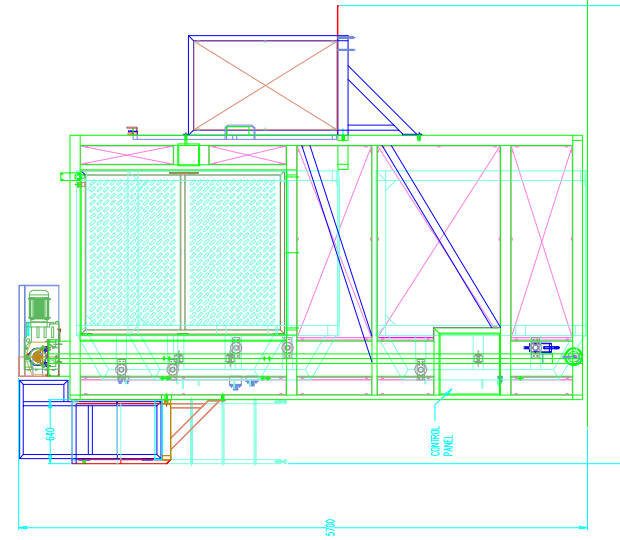
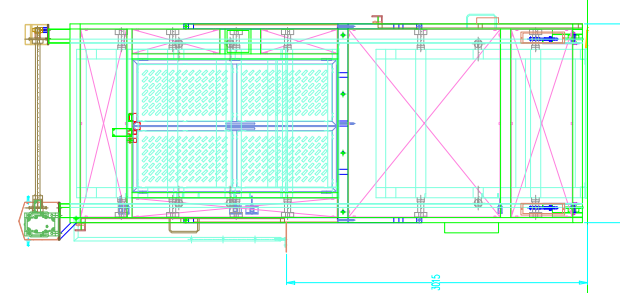
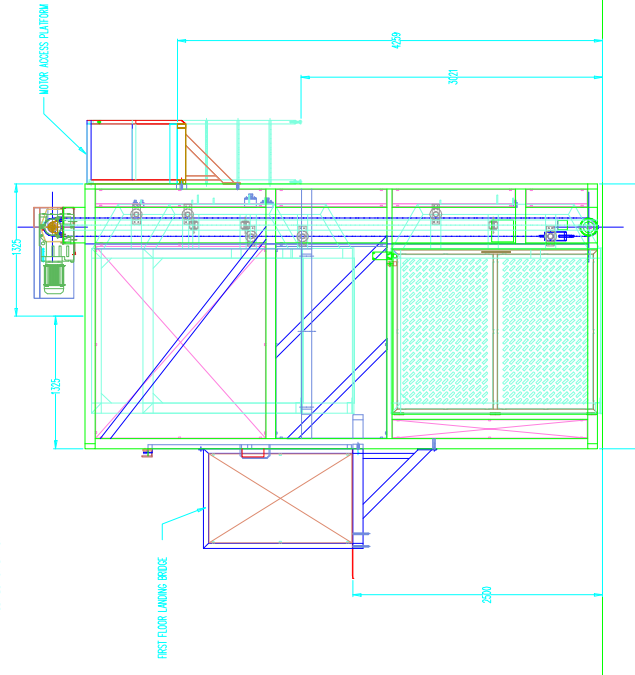
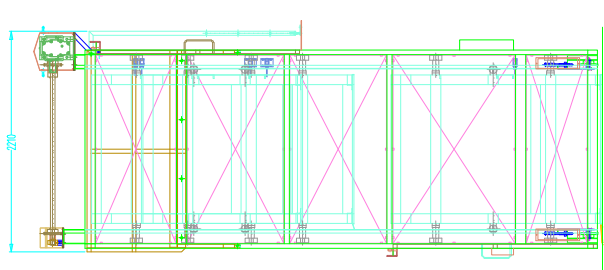
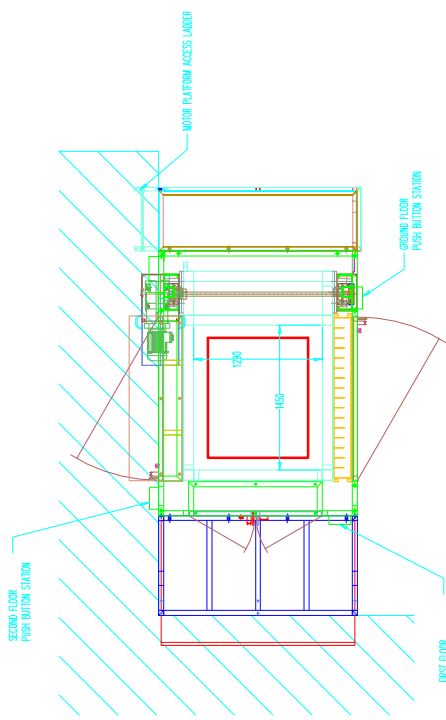
Between Floor Lift Specification

DESCRIPTION	DOUBLE PILLAR BETWEEN FLOOR LIFT
MODEL No.	PLM/1500/2500-3015/B/G
CAPACITY	1500Kgs
FIRST FLOOR LIFT HEIGHT	2500mm
SECOND FLOOR LIFT HEIGHT	3015mm
OVERALL HEIGHT	5700mm
MACHINE HANDING	LEFT OR RIGHT HAND AVAILABLE
PLATFORM SIZE	1450 x 1290mm
CONTAINER DESCRIPTION	STANDARD PALLET 1200 x 1000mm
BASE ARRANGEMENT	BOLTED TO THE FLOOR
CONTROL CIRCUIT	24Vac (STANDARD)
ELECTRICAL RATING	IP65
LIMIT SWITCHES	ADJUSTABLE ROD
MOTOR DETAIL	2.2kW, 3 PHASE, 50 CYCLE, 415V
MOTOR BRAKE	415V SEPARATELY EXCITED
GEARBOX DETAIL	FLENDER
LIFT CHAIN	1" SIMPLEX SEDIS DELTA 'Z'
TENSION CHAIN	3/4" SIMPLEX SEDIS DELTA 'Z'
LIFT SPEED	6.4 METERS/MINUTE

Between Floor Lift Application Story

This between floor lift was required to elevate a standard pallet (1200 x 1000mm) from a ground floor level onto a split level mezzanine floor at a height of 2500mm and 3015mm respectively. In addition to this, the between floor lift was loaded at the front, unloaded to the left hand side at the first floor and unloaded to the back of the machine at the second floor. This between floor lift can be mounted on an existing floor and therefore does not require a pit to be created with the requisite drainage issues.

It was also necessary to bridge a gap of 1000mm at the first floor level which was done by constructing and installing a stainless steel bridge. We also provided maintenance access to the motor gearbox and bearing arrangement via a ladder and platform mounted at the back of the between floor lift.



REMOVE ALL BURRS AND SHARP EDGES	
TOLERANCES : UNLESS OTHERWISE STATED	
FABRICATIONS : +/- 2.0mm	
MACHINING : +/- 0.2mm	
SHEET METAL WORK : +/- 1.0mm AND +/- 1.0 DEG	
DRAWN	CHECKED
JPW	DATE
	16-11-04
DRAWING NUMBER	
BP2895-1	

COPYRIGHT RESERVED
DRAWN THIRD ANGLE PROJECTION



BASE HANDLING PRODUCTS LIMITED
 UNIT 20 BARLEFIELD INDUSTRIAL ESTATE,
 BRYNMAWR,
 GMENT, NP23 4TF
 TEL: (01495) 312172 FAX: (01495) 312089 EMAIL: info@baseproducts.co.uk

REVISION NUMBER

CUSTOMER

DRAWING TITLE

DOUBLE PILLAR PALLET LIFT
 BOLTED GUARDED