

## Double Pillar Lifter

### Double Pillar Lifter

BTM/600/3200/B/G

### Double Pillar Lifter Description

This double pillar lifter is designed to lift and tip a 680 Litre container (1020 x 820 x 1210mm High) at a discharge height of 3200mm. The double pillar lifter is constructed from Grade 304 stainless steel and is fully TIG welded throughout. Lifting with the double pillar lifter is accomplished via chains driven by a motor gearbox mounted at the top of the one column with a crossover shaft to the other column. This double pillar lifter is designed to be bolted to the floor.



*Double Pillar Lifter for 680 Litre Container*

Call now on **01495 312 172**

[webenquiry@basehandling.co.uk](mailto:webenquiry@basehandling.co.uk)

Base Handling Products Limited, Unit 20, Barleyfield Industrial Estate  
Brynmawr, Gwent, NP23 4YF.



**Safety Guard to PD 5304:2005 Safety of Machinery**

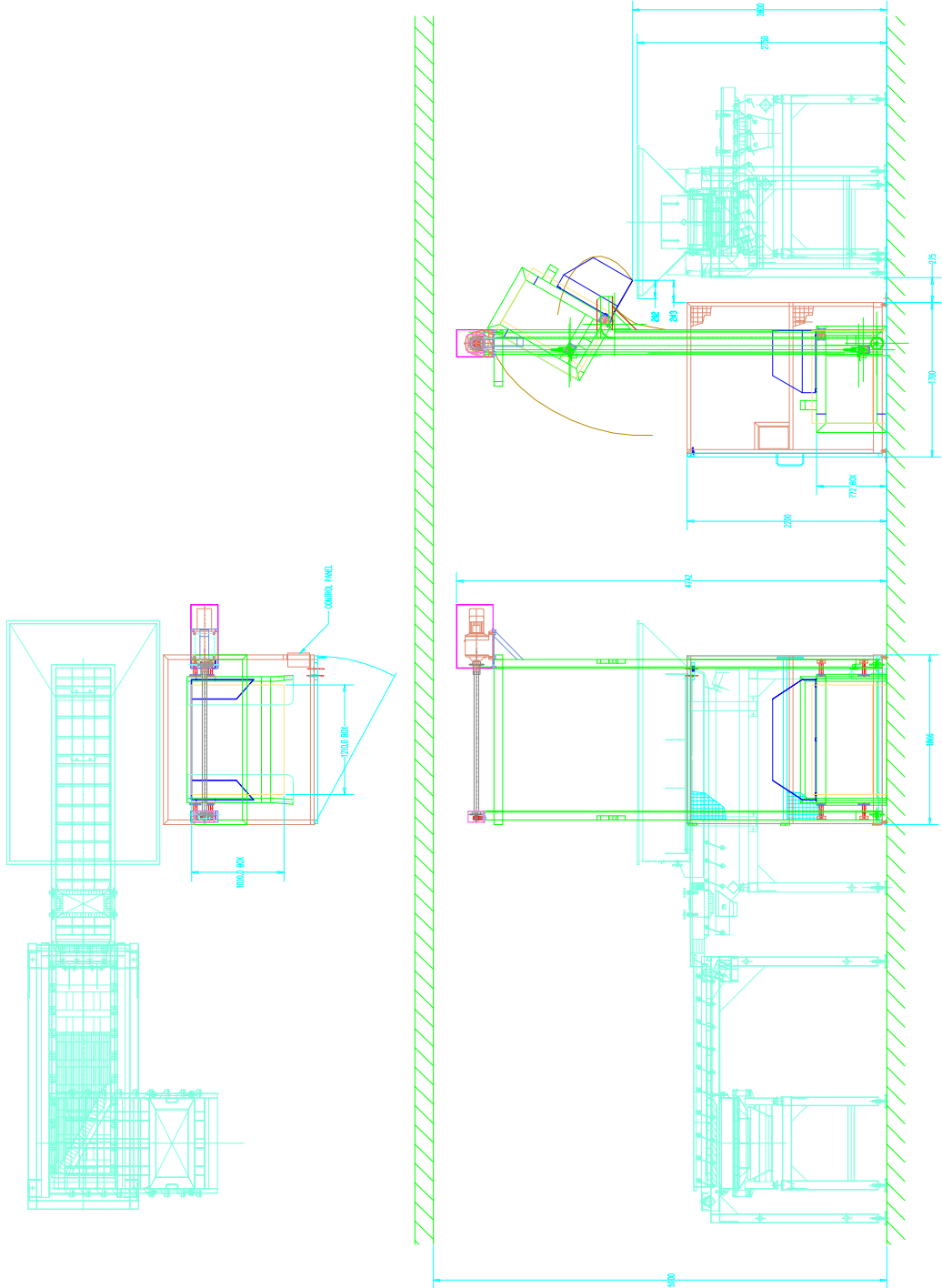
The safety guard is constructed from 40 x 40 x 3mm stainless steel box section and 3mm wire, 40mm aperture stainless steel weld mesh to meet the requirements of PD 5304:2005 Safety of Machinery. It would enclose the double pillar lifter to a height of 2200mm on three sides with a hinged door on the fourth side. The guard door is electrically and mechanically interlocked preventing the double pillar lifter from operating with the door open. In addition, the guard door can only be opened when the lifting carriage is at the full down position. The double pillar lifter control system has provision for a 'Call for Product' signal to be connected.

**Double Pillar Lifter Specification**

|                       |                                |
|-----------------------|--------------------------------|
| DESCRIPTION           | DOUBLE PILLAR LIFTER           |
| MODEL No.             | BTM/600/3200/B/G               |
| CAPACITY              | 600Kgs                         |
| TIPPING HEIGHT        | 3200mm                         |
| TIPPING ANGLE         | 130 DEGREES                    |
| OVERALL HEIGHT        | 4750mm                         |
| MACHINE HANDING       | LEFT OR RIGHT HAND AVAILABLE   |
| TIPPING CHUTE         | OPTIONAL                       |
| CONTAINER DESCRIPTION | 680 LITRE CONTAINER            |
| BASE ARRANGEMENT      | BOLTED TO THE FLOOR            |
| CONTROL CIRCUIT       | 24Vac (STANDARD)               |
| ELECTRICAL RATING     | IP65                           |
| LIMIT SWITCHES        | ADJUSTABLE ROD                 |
| MOTOR DETAIL          | 2.2kW, 415V, 3 PHASE, 50 CYCLE |
| MOTOR BRAKE           | 415V SEPARATELY EXCITED        |
| GEARBOX DETAIL        | FLENDER                        |
| LOAD CHAIN            | 1" SIMPLEX SEDIS DELTA Z       |
| TENSION CHAIN         | ¾" SIMPLEX DELTA Z             |
| LIFT SPEED            | 6.4 METERS/MINUTE              |

**Double Pillar Lifter Application Story**

This double pillar lifter was required to lift and tip confectionery products into a conveyor storage system. A selection of different confectionery was lifted, tipped and spread onto the storage conveyor until a level of approximately 250mm was achieved. The confectionery was then fed off the storage conveyor onto another conveyor at the beginning of a packing line.



|  |         |                                      |          |
|--|---------|--------------------------------------|----------|
| REMOVE ALL BURRS AND SHARP EDGES             |         | TOLERANCES : UNLESS OTHERWISE STATED |          |
| FABRICATIONS : +/- 2.0mm                     |         | MACHINING : +/- 0.2mm                |          |
| SHEET METAL WORK : +/- 1.0mm AND +/- 1.0 DEG |         | DRAWN                                |          |
| JPW  | CHECKED | DATE                                 | 10.07.04 |
| DRAWING NUMBER                               |         |                                      | BP2812-1 |

COPYRIGHT RESERVED  
 DRAWN THIRD ANGLE PROJECTION

**BASE HANDLING PRODUCTS LIMITED**  
 UNIT 20 BARLEFIELD INDUSTRIAL ESTATE,  
 BRYNMAWR,  
 Gwent, NP23 4TF  
 TEL: (01495) 312172 FAX: (01495) 312089 EMAIL: info@baseproducts.co.uk

|                 |          |  |                |
|-----------------|----------|--|----------------|
| REVISION NUMBER | CUSTOMER | DRAWING TITLE                                    | DRAWING NUMBER |
|                 |          | DOUBLE PILLAR DOLAF BIN TIPPER<br>BOLTED GUARDED |                |